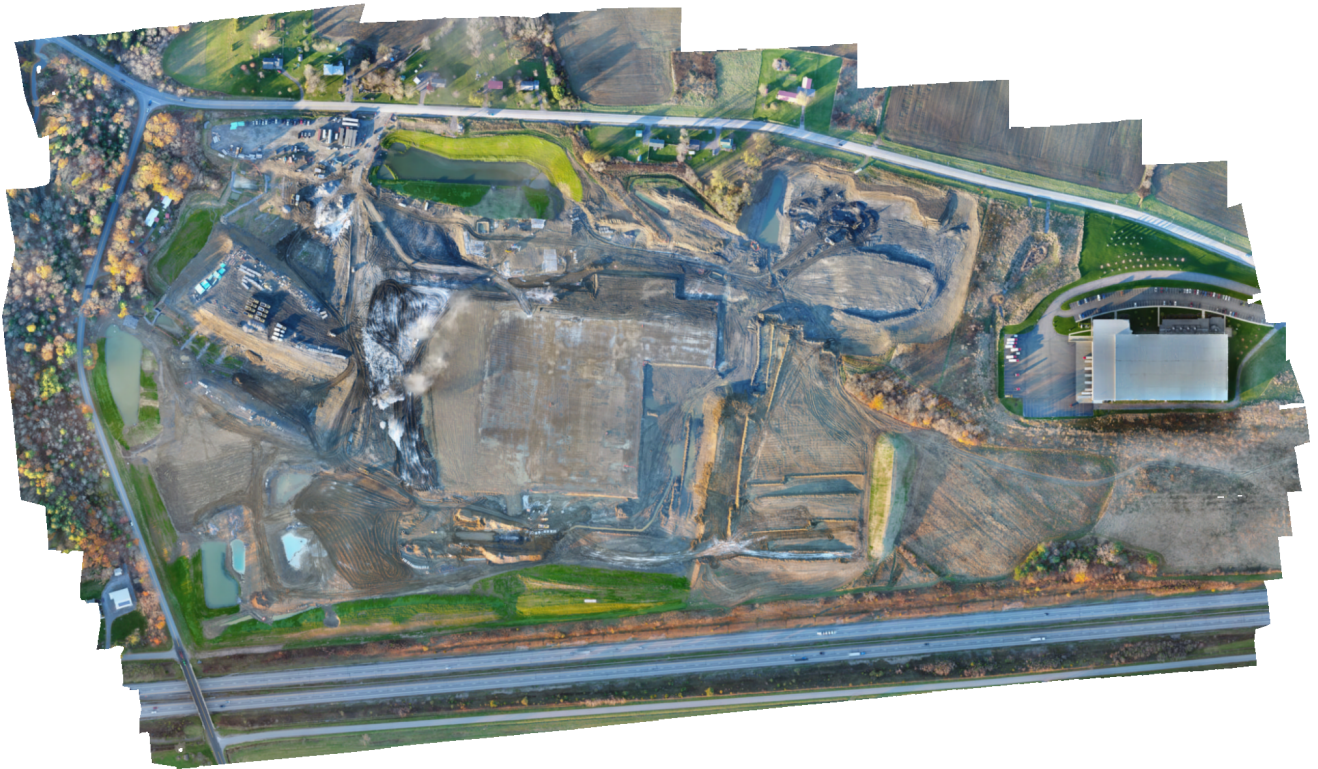


# Sample Report 11/08/2017

Sample Site Report 11/08/2017  
13 November 2017



# Survey Data

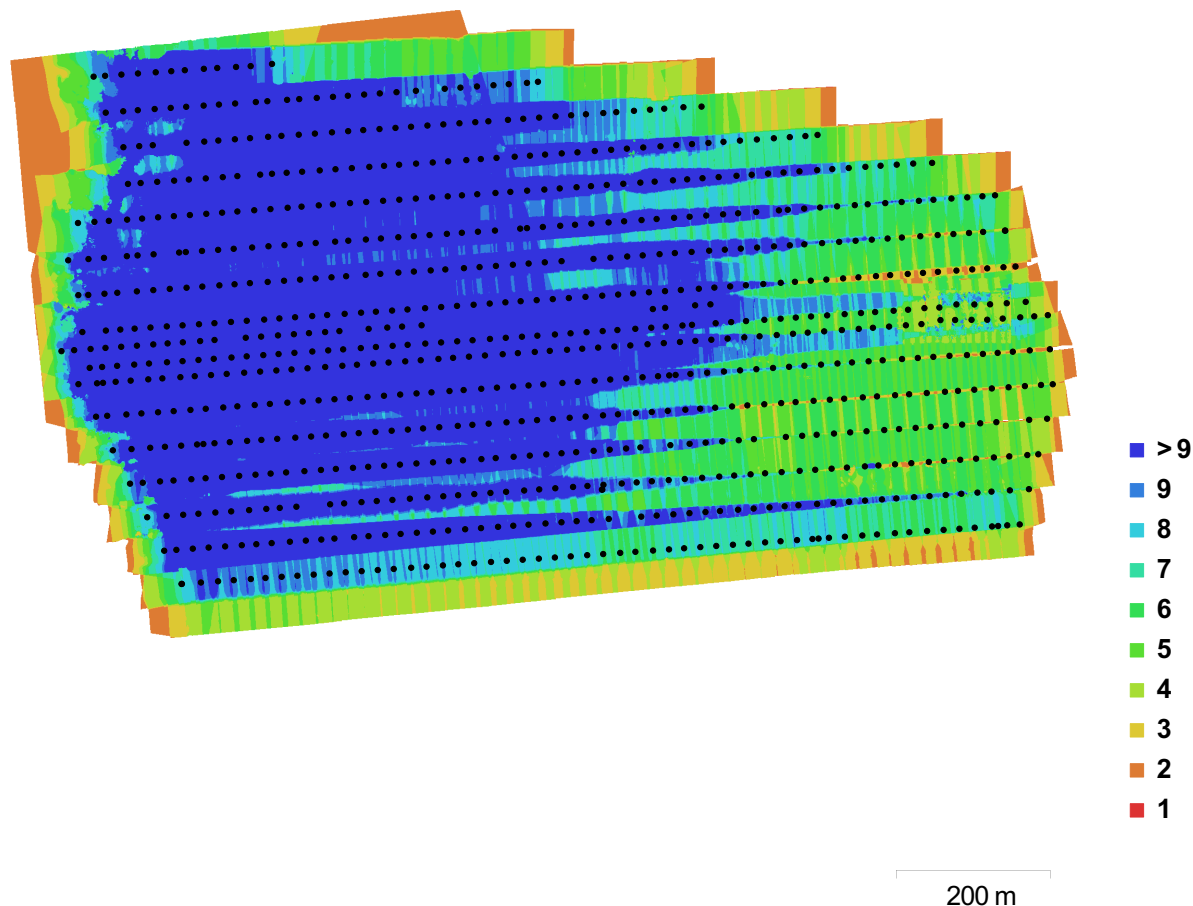


Fig. 1. Camera locations and image overlap.

Number of images:	856	Camera stations:	838
Flying altitude:	88.4 m	Tie points:	640,244
Ground resolution:	2.16 cm/pix	Projections:	2,936,373
Coverage area:	0.887 km <sup>2</sup>	Reprojection error:	0.889 pix

Camera Model	Resolution	Focal Length	Pixel Size	Precalibrated
FC6310 (8.8 mm)	5472 x 3648	8.8 mm	2.41 x 2.41 um	No

Table 1. Cameras.

# Camera Calibration

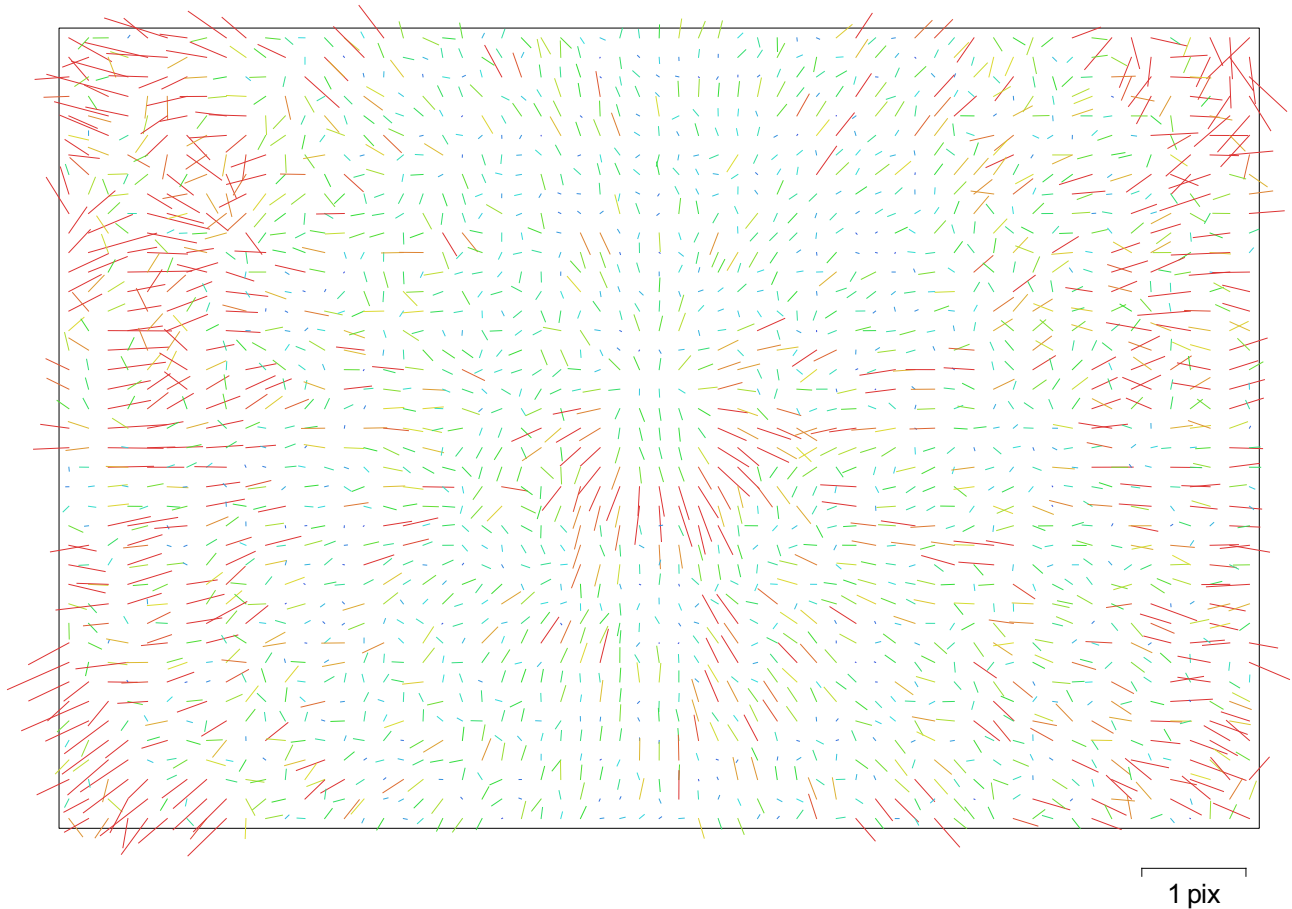


Fig. 2. Image residuals for FC6310 (8.8 mm).

## FC6310 (8.8 mm)

856 images

Resolution	Focal Length	Pixel Size	Precalibrated
<b>5472 x 3648</b>	<b>8.8 mm</b>	<b>2.41 x 2.41 um</b>	<b>No</b>
Type:	Frame	F:	3685.05
Cx:	38.8504	B1:	-0.392795
Cy:	57.1786	B2:	0.55421
K1:	0.0108576	P1:	0.00344256
K2:	-0.0535343	P2:	0.00320239
K3:	0.0984087	P3:	0
K4:	-0.0599365	P4:	0

# Camera Locations

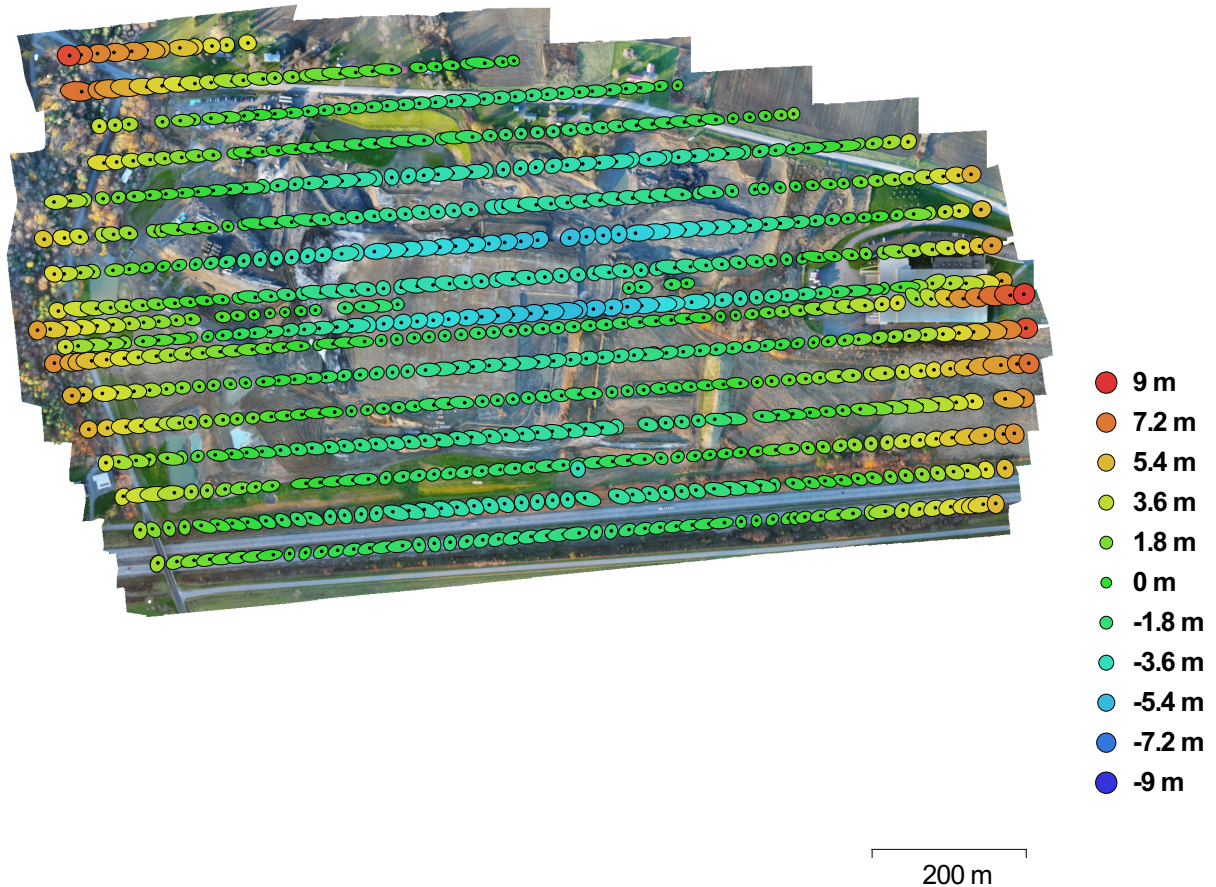


Fig. 3. Camera locations and error estimates.

Z error is represented by ellipse color. X,Y errors are represented by ellipse shape.

Estimated camera locations are marked with a black dot.

X error (m)	Y error (m)	XY error (m)	Z error (m)	Total error (m)
5.20942	0.963777	5.29783	2.8582	6.01966

Table 2. Average camera location error.

# Digital Elevation Model

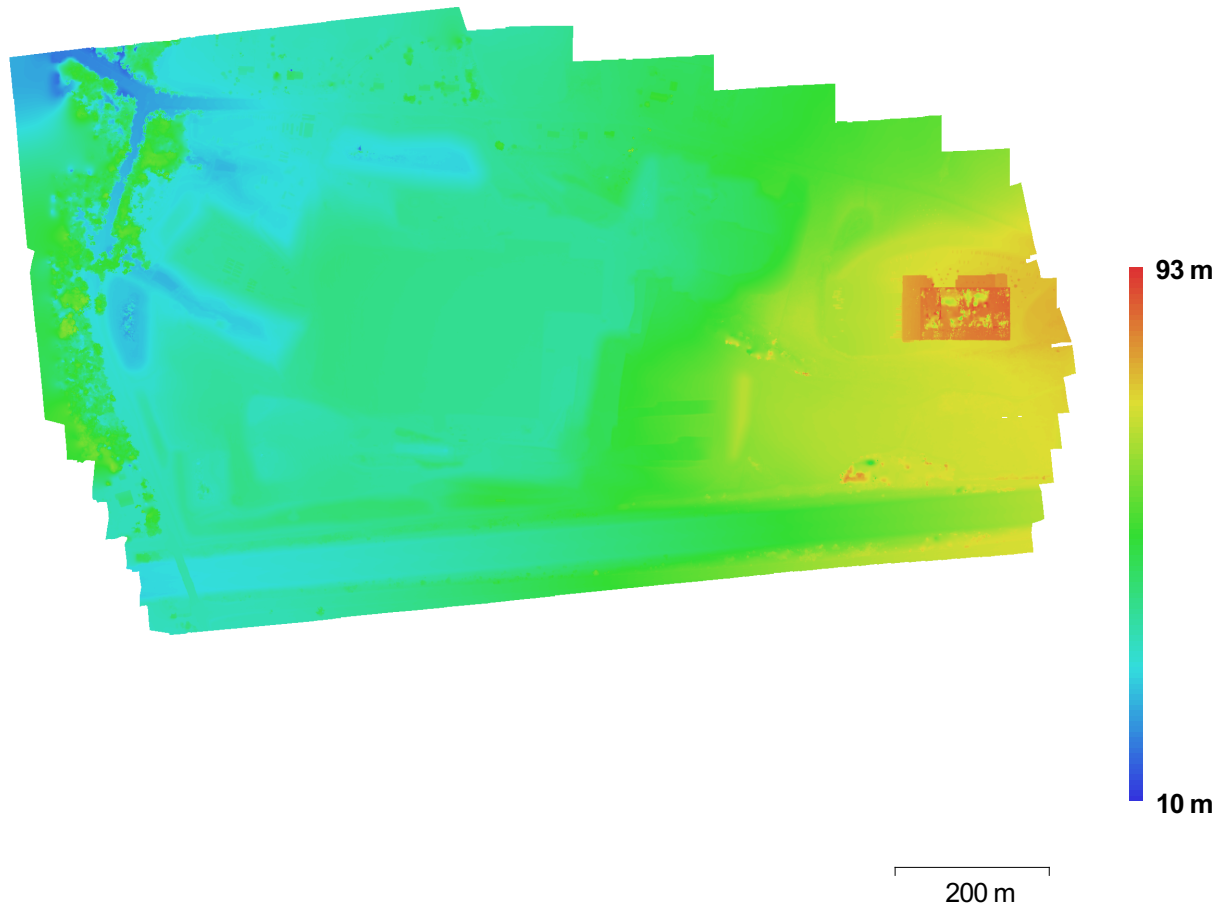


Fig. 4. Reconstructed digital elevation model.

Resolution: 8.65 cm/pix  
Point density: 133.531 points per sq m

# Processing Parameters

## General

Cameras	856
Aligned cameras	838
Coordinate system	WGS 84 (EPSG:4326)

## Point Cloud

Points	640,244 of 724,221
RMS reprojection error	0.185248 (0.88931 pix)
Max reprojection error	0.559022 (43.802 pix)
Mean key point size	4.63998 pix
Effective overlap	4.78373

## Alignment parameters

Accuracy	High
Pair preselection	Reference
Key point limit	40,000
Tie point limit	4,000
Constrain features by mask	No
Matching time	1 hours 10 minutes
Alignment time	13 minutes 29 seconds

## Dense Point Cloud

Points	128,057,495
--------	-------------

## Reconstruction parameters

Quality	Medium
Depth filtering	MId
Processing time	33 minutes 4 seconds

## Model

Faces	25,313,639
Vertices	12,663,075
Texture	4,096 x 4,096, uint8

## Reconstruction parameters

Surface type	Height field
Source data	Dense
Interpolation	Enabled
Quality	Medium
Depth filtering	MId
Face count	25,461,299
Processing time	7 minutes 7 seconds

## Texturing parameters

Mapping mode	Adaptive orthophoto
Blending mode	Mosaic
Texture size	4,096 x 4,096
UV mapping time	4 minutes 59 seconds
Blending time	12 minutes 14 seconds

## DEM

Size	17,384 x 12,015
Coordinate system	WGS 84 (EPSG:4326)

## Reconstruction parameters

Source data	Dense cloud
Interpolation	Enabled
Processing time	2 minutes 1 seconds

## Orthomosaic

Size	63,983 x 37,700
Coordinate system	WGS 84 (EPSG:4326)

Channels	3, uint8
----------	----------

Blending mode	Mosaic
---------------	--------

## Reconstruction parameters

Surface	DEM
---------	-----

Enable color correction  
Processing time

No  
18 minutes 56 seconds

**Software**

Version  
Platform

1.2.5 build 2594  
Windows 64 bit